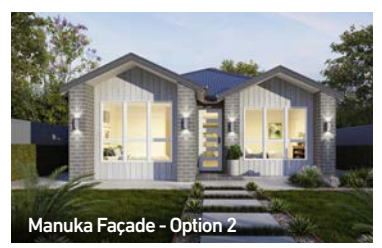
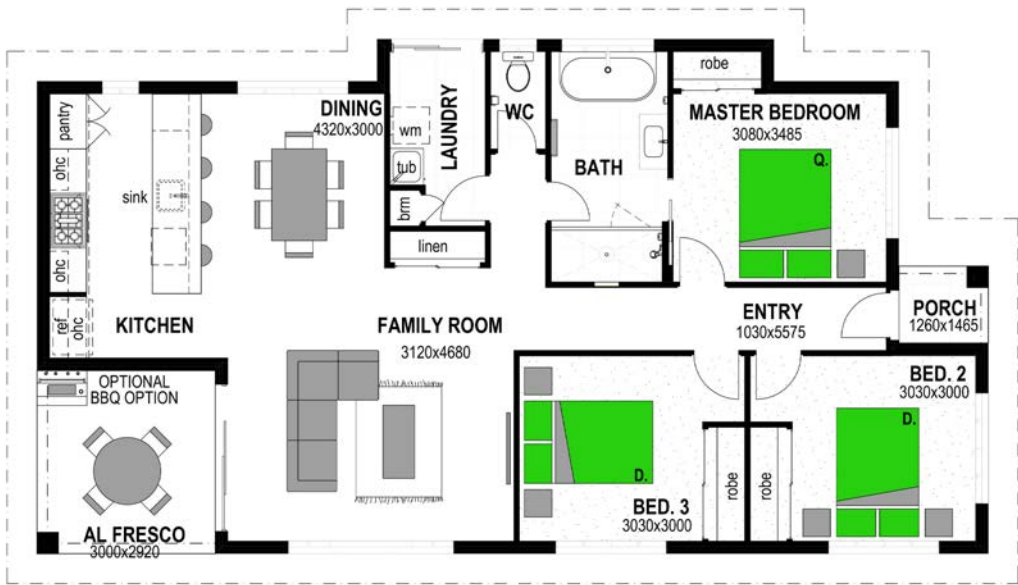




Manuka Façade - Option 1

3 1

Warrington 120



Manuka Façade - Option 2



Classic Façade



Mountain Façade

Floor Areas

Porch	1.8m ²
Alfresco	8.8m ²
Living	110m ²
TOTAL	(12.9sqsq) 120.6m²
Width	8.4m
Depth	15.6m

Floor plan and dimensions shown are for the Classic Façade.