



Manuka Façade

4 2 2

# Koru 348



Colonial Façade



Hamptons Façade



Classic Façade



Mountain Façade



Alpine Façade

## Floor Areas

Porch	7.6m <sup>2</sup>
Alfresco	39.5m <sup>2</sup>
Garage	41.4m <sup>2</sup>
Living	260.2m <sup>2</sup>
<b>TOTAL</b>	<b>(37.5sqsq) 348.7m<sup>2</sup></b>
Width	30.4m
Depth	14.9m

## Features

- Family Room
- Games Room
- Butler's Pantry
- Media
- Study

Floor plan and dimensions shown are for the Classic Façade.

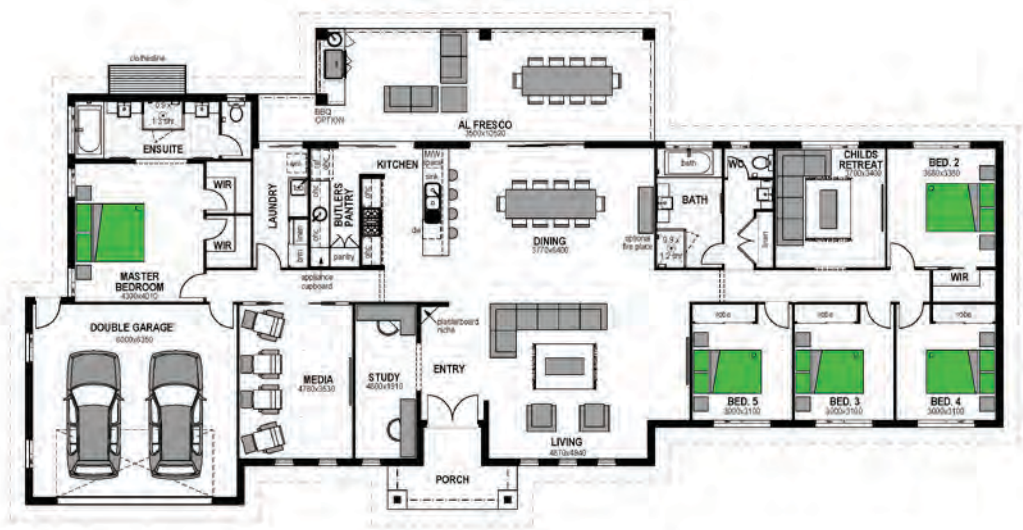
More Façades available. Speak with our team or see [www.stroudhomes.co.nz](http://www.stroudhomes.co.nz) to see the full range.



Alpine Façade

🚗 5 🍽️ 2 🚗 2

# Koru 348 - 5 Bedroom Option



Colonial Façade



Hamptons Façade



Classic Façade



Manuka Façade







Mountain Façade

## Floor Areas

Porch	7.6m <sup>2</sup>
Alfresco	39.5m <sup>2</sup>
Garage	41.4m <sup>2</sup>
Living	260.2m <sup>2</sup>
<b>TOTAL</b>	<b>(37.5sqs) 348.7m<sup>2</sup></b>
Width	30.4m
Depth	14.9m

## Features

-  Child's Retreat
-  Study
-  Media
-  Butler's Pantry

Floor plan and dimensions shown are for the Classic Façade.

More Façades available. Speak with our team or see [www.stroudhomes.co.nz](http://www.stroudhomes.co.nz) to see the full range.



Hamptons Façade

🚗 6 🍽️ 2 🚗 2

# Koru 348 - 6 Bedroom Option



Colonial Façade



Alpine Façade



Classic Façade



Manuka Façade



Mountain Façade

## Floor Areas

Porch	7.6m <sup>2</sup>
Alfresco	39.5m <sup>2</sup>
Garage	41.4m <sup>2</sup>
Living	260.2m <sup>2</sup>
<b>TOTAL</b>	<b>(37.5sqsq) 348.7m<sup>2</sup></b>
Width	30.4m
Depth	14.9m

## Features

-  Child's Retreat
-  Study
-  Butler's Pantry

Floor plan and dimensions shown are for the Classic Façade.

More Façades available. Speak with our team or see [www.stroudhomes.co.nz](http://www.stroudhomes.co.nz) to see the full range.