

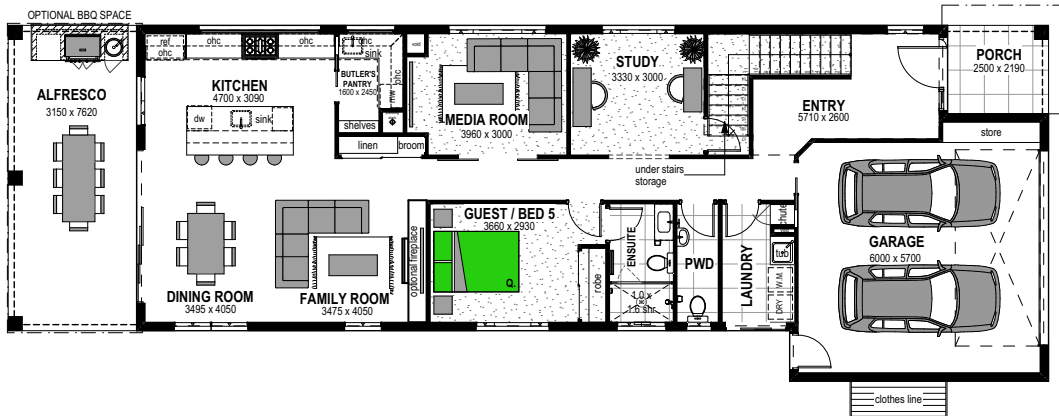


Classic Façade

5 3.5 2

Cityview 364

Ground Floor



Floor Areas

Ground Floor Living	135m ²
Upper Floor Living	164.5m ²
Garage	39m ²
Porch	5.5m ²
Alfresco	23.9m ²
TOTAL (39.6sqsq)	367.9m²

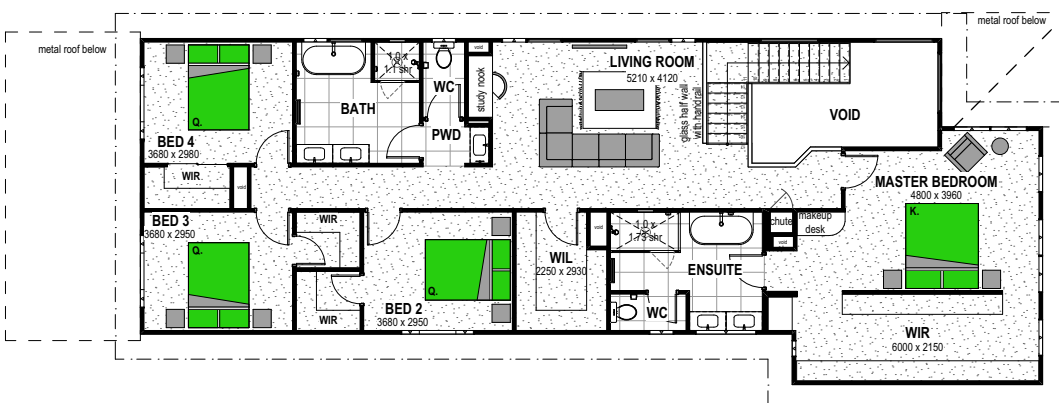
Width	8.8m
Depth	25.8m

Floor plan and dimensions shown are for the Classic Façade.

Features

- Media
- Study
- Butler's Pantry
- Walk-In Linen

Upper Floor



Facades



Scan the QR code to view all Cityview 364 facades.